

# Spraying Implement Control



Flexible spraying implement control for any size operation



# Leading Spraying Control

The Topcon Spraying Implement Control solution, with the Apollo CM-40 controller, provides auto-section and variable rate control for 100+ sections and up to eight products for nearly any self-propelled and pull-type sprayer. Not only does the solution provide flexible levels of capability for any size operation, it also offers a proprietary interface through Topcon Horizon OS and universal ISOBUS interface through the ISO-UT for display flexibility.

**Accurate and reliable spraying control**

**Real-time monitoring and logging for better agronomic decisions**

**Easy to install, setup and use, reducing stress**

**Easy to install interface through proprietary software, Horizon OS**

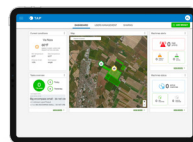
**ISO-UT compatibility for display flexibility**

Equipped with impactful features including fence jet nozzle support and a recipe calculator,\* Topcon offers progressive and future-proof spray control. Specifically, through direct software support of Pentair Hypro ProStop-E Valves,\* farmers can control 200+ sections, down to the individual nozzle. It allows for incredibly precise nutrient management, driving farmers that much closer to individual crop management.

When coupled with the Topcon Agriculture Platform (TAP), farmers can upload various data such as soil, seed, yield, and as-applied, to improve spraying decisions. Plus, prescription maps can be created and sent directly to the cab through TAP and Topcon hardware.

*\*Horizon OS only*

## Complementary Products



### Data Services

Digital farm management and telematics



### X Family Consoles

X25 and X35 displays



### Guidance

Manual and auto-steering solutions



Specifications subject to change without notice.  
© 2019. Topcon Positioning Systems, Inc.  
All rights reserved. 7010-2294 A 11/19

[www.topconagriculture.com](http://www.topconagriculture.com)