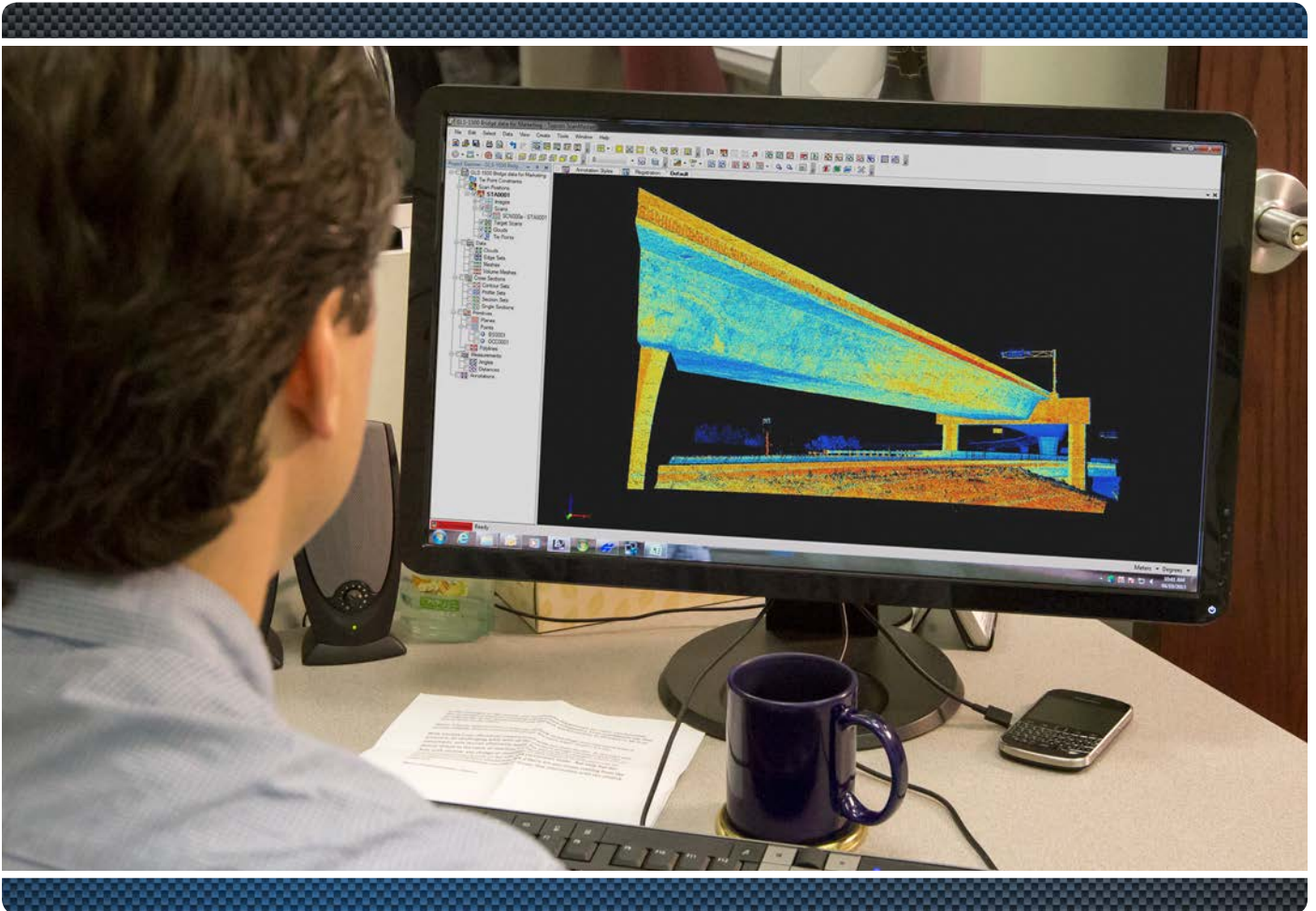


Functional Comparison Guide



- High-performance Point Cloud Engine
- Cloud-to-Cloud Registration
- FARO (.FLS) File Format Import
- ASTM E57 and PCD File Format Import/Export
- Volume Calculation
- Automatic Edge Set Extraction
- Free (Basic) Viewer Mode

ScanMaster 3 Functional Comparison

File	ScanMaster 3	ScanMaster Viewer 3	View	ScanMaster 3	ScanMaster Viewer 3
New Project	•	•	Navigation (Sphere / Cube / Target Scan)	•	•
Open Project	•	•	Projection (Parallel / Perspective)	•	•
Close Project	•	•	Set Target	•	•
Save Project	•	•	Zoom (Up / Down)	•	•
Save Project As	•	•	Zoom (Extents / Selection / Top / Bottom / Front / Back / Left / Right)	•	•
Import GLS-1000/1500 Project Files	•	•	Elevation View	•	•
Import GLS-2000 Project Files	•	•	Show / Hide Axes / Information / Bounds / Grid / Legend	•	•
Import GLS-2000 Station Files	•	•	Show / Hide Tables	•	•
Import Autodesk Files (.DXF / .DWG)	•	•	Show / Hide Toolbars	•	•
Import Coordinate Point Files (.TXT)	•	•	Show / Hide Windows	•	•
Export Autodesk Files (.DXF / .DWG)	•	•	Save Camera	•	•
Save Screenshot	•	•	Import Camera	•	•
Print			Create Multiple Views	•	•
Page Setup	•	•	Point Density Control	•	•
Print Preview	•	•	Point Size Control	•	•
Print	•	•	Customize Mouse Buttons	•	•
Edit			Window		
Undo / Redo	•	•	Close / Close All	•	•
Delete Objects	•	•	Collapsed / Docked / Floating	•	•
Rename Objects	•	•	Reset Layout	•	•
Object Properties	•	•	Images		
Object Tables	•	•	Import	•	•
Select			Export	•	•
Selection Mode (Data / Object)	•	•	Scans		
All	•	•	Color from Images	•	
None	•	•	Color from Images (use other Scan Positions)	•	
Invert	•	•	Clear Image Colors	•	
Point	•	•	Filter Noise	•	
Rectangle	•	•	Purge Deleted	•	
Polygon	•	•	Recover Deleted	•	
Region	•	•	Import	•	•
Data			Import FARO (.FLS) files	•	
Coloring by Elevation / Image / Intensity / Layer / Normals / Regions	•	•	Import E57 Files	•	
Contrast Adjustment	•	•	Export	•	
Gamma Correction	•	•	Export E57 Files	•	
Show / Hide Data	•	•	Calculate Normals	•	
Delete / Restore Data	•	•	Resample	•	
Slice	•	•	Target Scans		
Occlude	•	•	Import	•	•
GLS Control			Export	•	
Connect to Device (Wi-Fi / USB)	•	•	Scan Positions		
Live Video Control	•	•	Create Scan Position	•	•
Capture Images	•	•	Tie Points		
Capture Scans	•	•	Create Tie Point from Target Scan	•	•
Capture Target Scans	•	•	Draw Tie Point	•	
Pause / Resume / Cancel Scanning	•	•	Set Position	•	
Show Device Properties	•	•	Tie Point Constraints		
Show Device Tasks	•	•	Create Tie Point Constraint	•	
GLS-1500 Long Support	•	•	Select Tie Points	•	
Layer					
Create Layer	•	•			
Edit Layers	•	•			

ScanMaster 3 Functional Comparison

Registration	ScanMaster 3	ScanMaster Viewer 3	Observations	ScanMaster 3	ScanMaster Viewer 3
Register with Occupation and Backsight	•		Observation	•	
Register with Tie Points	•		Contour Sets		
Auto Registration by Geometry or Description	•		Extract Contour Set	•	
Clear Registration	•		Clear	•	
Resection	•		Re-extract	•	
Cloud-to-Cloud Registration	•		Explode	•	
Clouds			Profile Set		
Create Cloud	•		Extract Profile Set	•	
Filter Noise	•		Clear	•	
Resample	•		Re-extract	•	
Purge Deleted	•		Explode	•	
Recover Deleted	•		Section Set		
Import	•		Extract Section Set	•	
Import FARO (.FLS) Files	•		Clear	•	
Import E57 Files	•		Re-extract	•	
Export	•		Explode	•	
Export E57 Files	•		Single Section		
Color from Images (use other Scan Positions)	•		Extract Single Section	•	
Clear Images Colors	•		Clear	•	
Calculate Normals	•		Re-extract	•	
Edge Set			Explode	•	
Extract Edge Set from Scan	•		Planes		
Merge Edge Sets	•		Fit Plane	•	
Clear	•		Intersect	•	
Re-extract	•		Zoom Back / Bottom / Front / Left / Right / Top	•	
Explode	•		Points		
Meshes			Input Coordinates	•	•
Create Mesh	•		Draw Point	•	•
Color from Images (use other Scan Positions)	•		Set Position	•	•
Filter	•		Polylines		
Resample	•		Draw Polyline	•	
Import	•		Append Vertex	•	
Export	•		Reverse	•	
Volume Meshes			Merge	•	
Create Volume Mesh	•		Split	•	
Extract Bounds	•		Flatten	•	
Extract Centroid	•		Trim	•	
Import	•		Fit Edge	•	
Export	•		Modify	•	
Measurement			Annotation		
Measure Angle	•	•	Annotate	•	•
Measure Distance	•	•	Set Position	•	•
			Edit Annotation Style	•	•



7400 National Drive • Livermore • CA 94550
(925) 245-8300

Specifications subject to change without notice. ©2014 Topcon Corporation
All rights reserved. P/N: 7010-2166 A TF 10/14

The Bluetooth® word mark and logos are registered trademarks owned by Bluetooth SIG, Inc. and any use of such marks by Topcon is under license. Other trademarks and trade names are those of their respective owners.

Your local Authorized Topcon dealer is: