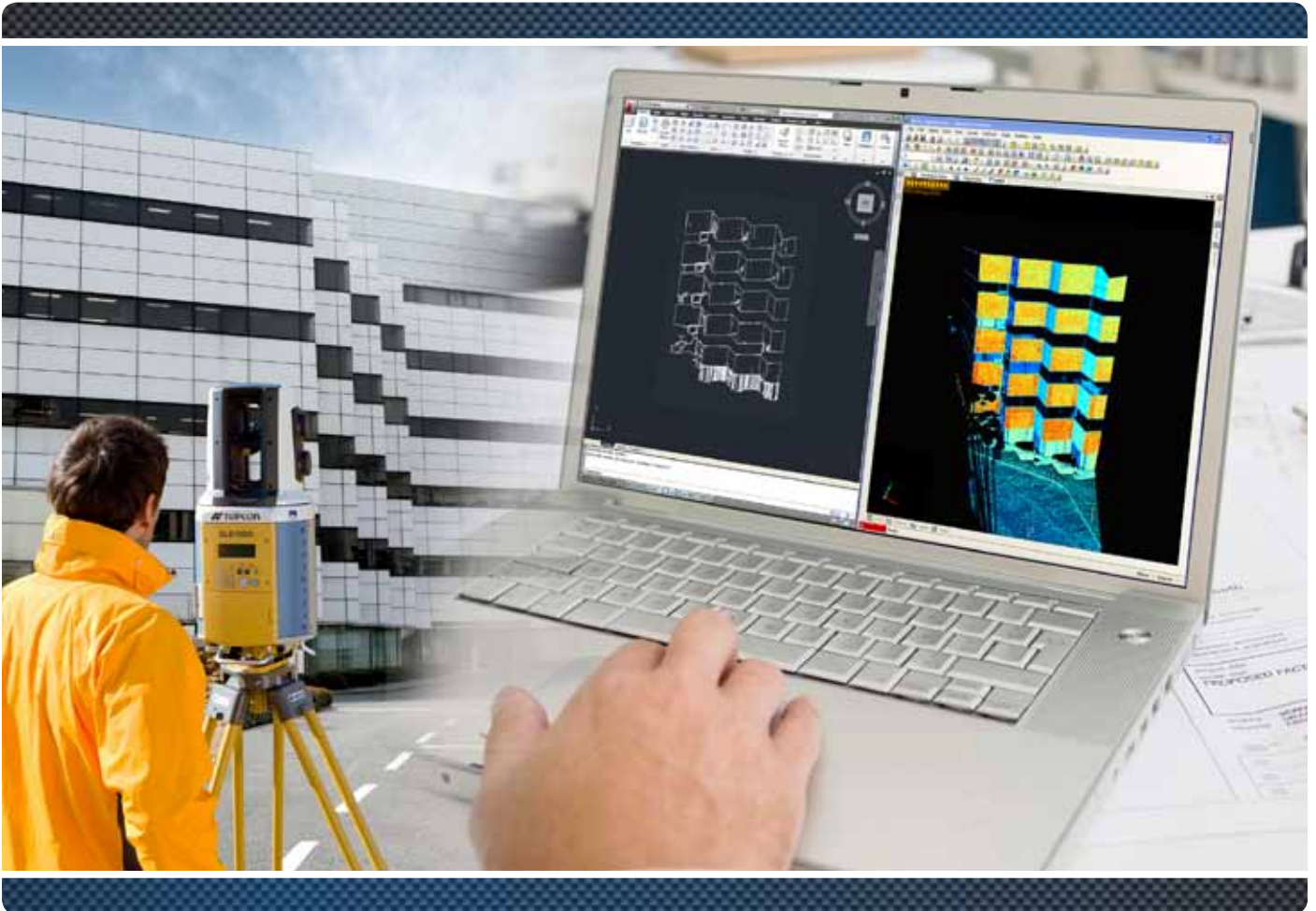


Tool for Efficient, Dynamic Drawing



- Interactive Link between ScanMaster and AutoCAD® Software
- Easily “Draw” Objects from Scan Data
- Display Screens Side-by-side for Seamless Operation
- Efficient Feature Extraction
- Streamline Pointcloud Workflow

SYSTEM REQUIREMENTS

OS VERSION

32-bit/64-bit Windows® 7
 32-bit/64-bit Windows® Vista
 32-bit Windows® XP SP3 and later

AutoCAD® VERSION

AutoCAD® 2008 – 2013
 AutoCAD® LT 2008 – 2013

ScanMaster for CAD Link is available in combination with ScanMaster v2.7 or as an upgrade to ScanMaster v2.0 or higher.

For more specification information:
topconpositioning.com/scanmaster



Auto CAD

ScanMaster CAD Link

ScanMaster



Perfect combination

A new feature of ScanMaster – ScanMaster CAD Link – allowing an operator to “draw” objects efficiently from data, is now available. With ScanMaster CAD Link, ScanMaster and AutoCAD screens are displayed side-by-side for seamless operation, allowing an operator to “draw” objects efficiently from data collected by Topcon’s GLS-1500.

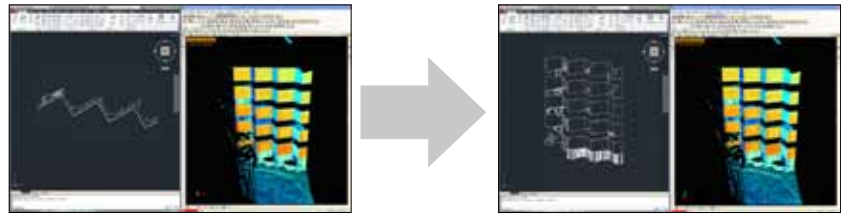


7400 National Drive • Livermore • CA 94550
 (925) 245-8300

Specifications subject to change without notice. ©2013 Topcon Corporation
 All rights reserved. P/N: 7010-2125 Rev. A TF Printed in U.S.A. 3/13

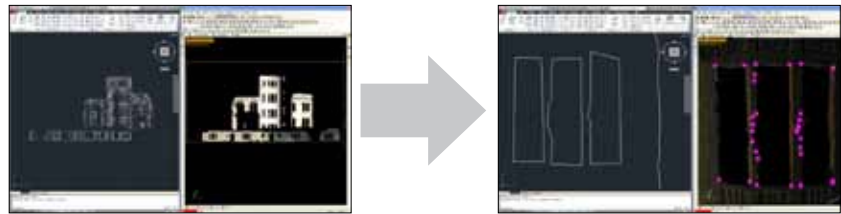
The Bluetooth® word mark and logos are registered trademarks owned by Bluetooth SIG, Inc. and any use of such marks by Topcon is under license. Other trademarks and trade names are those of their respective owners.

SOFTWARE OVERVIEW



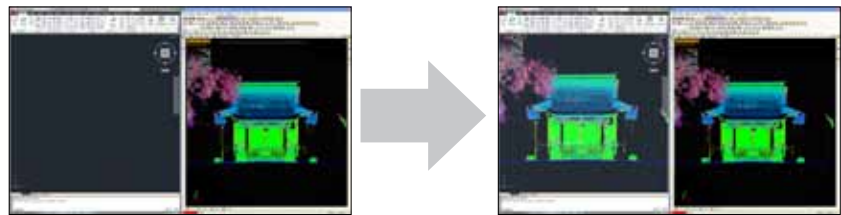
Synchronize Views of ScanMaster and AutoCAD

The “Sync Camera” tool keeps the camera orientation of AutoCAD while the ScanMaster view is rotating so that the current drawing plane is not rotated automatically. The view of AutoCAD and ScanMaster can be the same orientation by using the “Send Camera” function.



Send ortho-images as background images to AutoCAD screen

The ortho-image of scan data in the current view can be sent to AutoCAD as a background image.



Send Objects to AutoCAD

If you have already created objects in a ScanMaster project, you can send them directly to AutoCAD. Send new coordinates and distances by picking from the scan data.



Synchronize User Coordinate System (UCS)

The “Send Ortho-image” function sets the UCS so that the new X-Y plane is parallel to the image plane.

Your local Authorized Topcon dealer is: