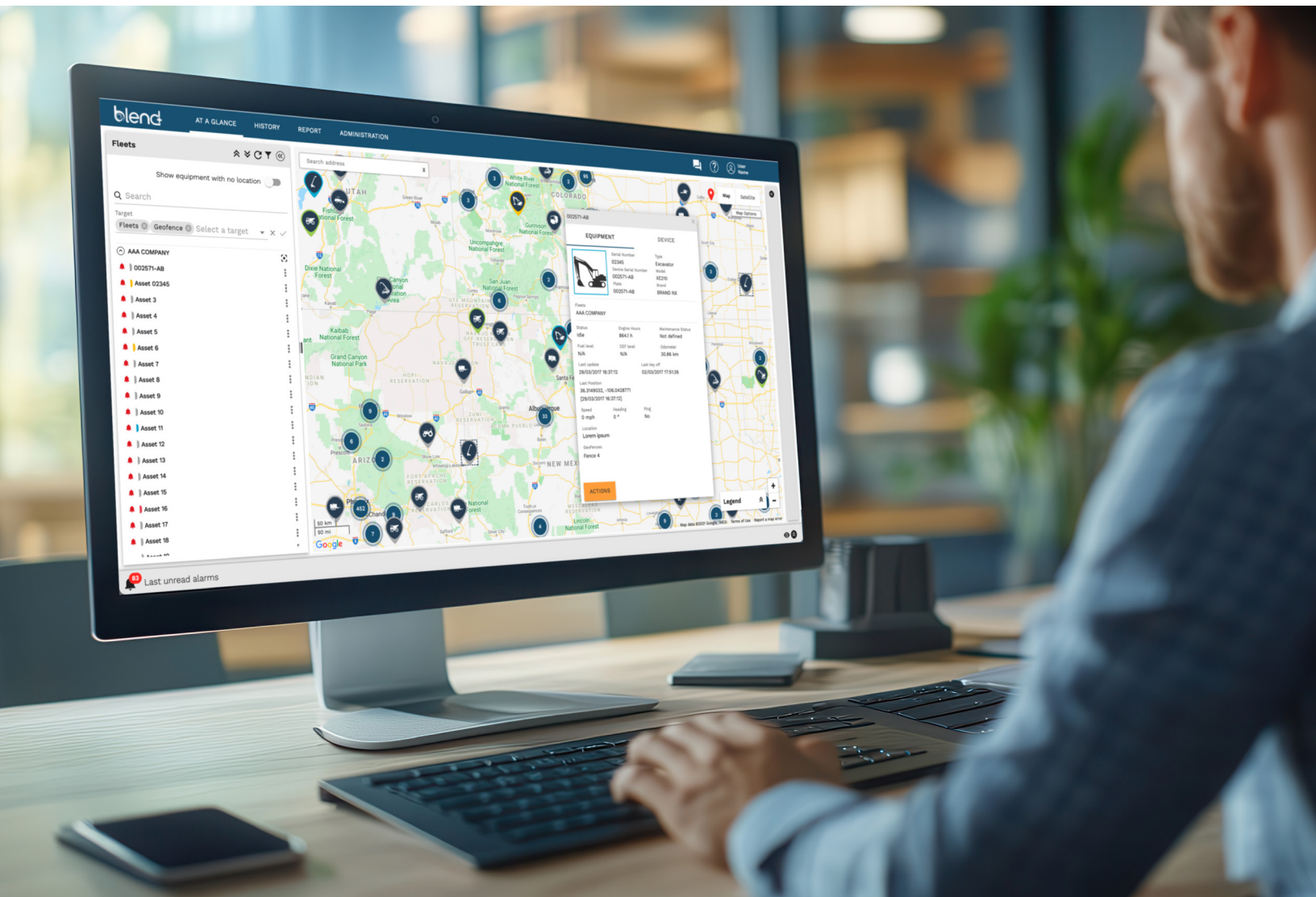


# Topcon Tierra® Blend+

## Fleet and Asset Management



Simple, flexible, and profitable

Learn more at [topconpositioning.com](http://topconpositioning.com)



# Manage Remote Assets 24/7 Anywhere in the World

## Increase production/Reduce costs

Measuring and recording idling rates are a key factor in determining overall productivity. By leveraging Blend+ pinpointed monitoring of most productive hours, inefficiencies can be corrected to optimize fuel consumption, maintenance needs and operating costs. Real-time information to help make real-time decisions.

## Reliable protection

Protect equipment fleets through curfew, geofences, unauthorized movement detection, and recovery tracking.

---

» Reduce fuel costs and emissions

---

» Improve machine security

---

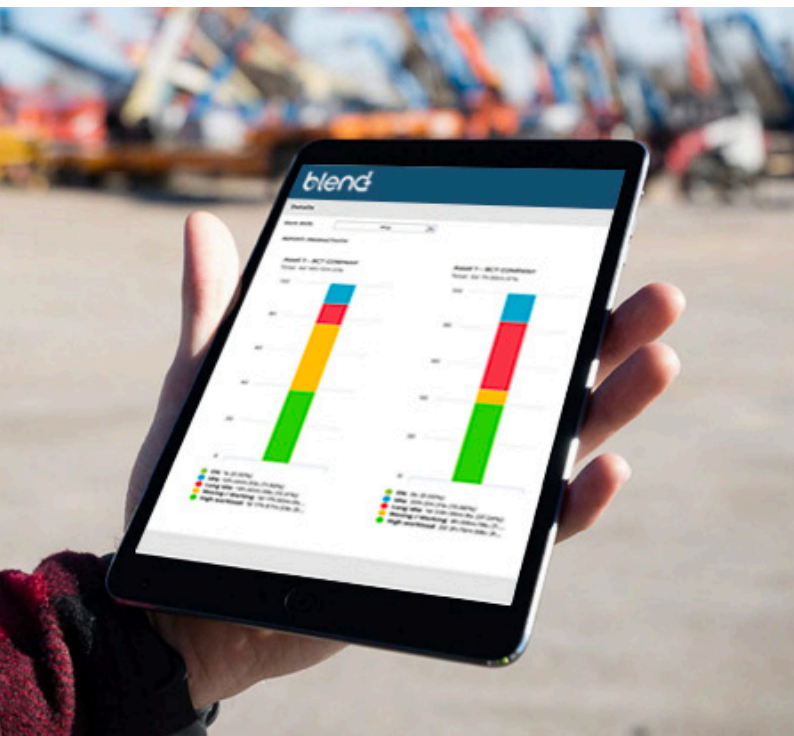
» Optimize maintenance

---

» Enhance equipment utilization

## Simplify maintenance

Use Blend+ to schedule machine maintenance efficiently and avoid manual collection time and errors. Check service status, receive automatic weekly updates, set notifications, and schedule maintenance intervals based on weekly average operating hours: all the information you'll need to maintain efficient and productive fleets.

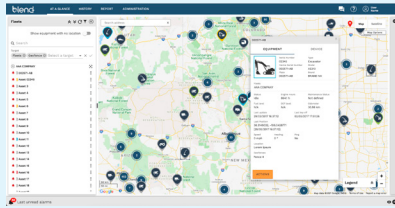


## The Blend+ Value Proposition

By gathering remote machine locations, information and operating hours, Blend+ provides the tools to make more informed decisions and to eliminate slow, inaccurate, labor-intensive routines. Providing immediate alerts and useful reports gives managers time to focus on actionable items with minimal effort. Solve problems quickly and get to work faster.

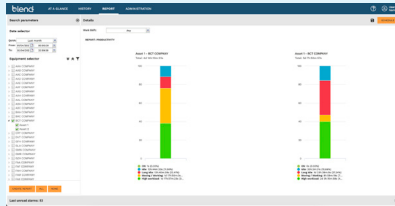
A multi-device system, Blend+ is part of a complete end-to-end solution providing complete control at every stage of the process to ensure maximum security and reliability with on-board devices, connectivity, data portal, and web platform.

# A closer look at the application



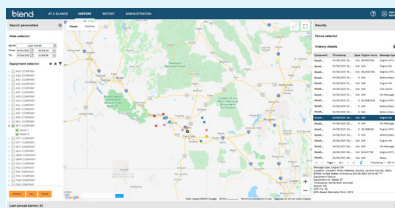
## At a glance

Do a quick search for one or more vehicles/fleets and have a snapshot of their position and status. You can also pinpoint specific equipment to display a recap of the most important information. The last unread alarms can be viewed at the bottom. This feature covers a set of important trigger events: geofence, curfew, motion detection, maintenance change status, or CANBUS/DM1 data.



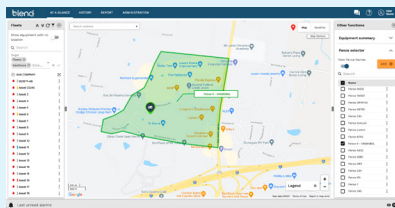
## Reports

Customize and export a series of reports to monitor your assets' activities and utilization. From fuel consumption to working hours, from alarms received to maintenance status, everything is under control.



## History

Track and trace the activities of your assets with selectable time ranges and map views, to evaluate their position, travel paths, and status.



## Curfews and Geofences

Use curfews and geofences to help increase safety and security to prevent thefts, misuse and errors.

## Power in hardware

This family of reliable, rugged devices will never let you down. With industry-proven technology, fall-back protection and versatile features, Tierra devices provide the security and dependability to stay connected and make quick decisions.



AMS4

### Flagship Telematics hardware solution:

- External rugged antenna and housing
- Cummins Connected Diagnostics
- Quick and easy J1939 CAN-Bus "plug and play" installation cable
- Best for medium to large construction or agriculture machinery



AM35

### Compact and low-cost Telematics hardware solution:

- Compact design with internal antenna
- Full-featured and rugged design
- Flexible installation options
- Best for compact and smaller machines for construction and agriculture machinery



AT20

### Non-powered asset tracking:

- Fully self-contained field replaceable battery powered tracker with long battery life
- Completely rugged and waterproof
- Best for trailers, large and small attachments or implements

# Blend+ seamlessly integrated with Topcon Aptix™ Platform

Aptix™ is a new integration as-a-service (iPaaS) platform that helps streamline the management of large civil engineering and infrastructure projects. Modular and integrated with Blend+'s custom API's, functional machine, work and positional data are exchanged with the Aptix™ platform to provide substantive comparisons between what is estimated and what is actually completed.

Aptix™ will automate manual processes and manage schedules, models, telematics and more by connecting many of the individual platforms construction professionals use to streamline workflows and increase jobsite and company efficiency.



For more information about Aptix, contact us:  
[info@tierra-america.com](mailto:info@tierra-america.com)

## Tierra remote service

This direct connection to the Cummins Connected Diagnostics\* system provides advanced diagnostics and troubleshooting for major components on construction equipment through a single interface. Connected Diagnostics enables:

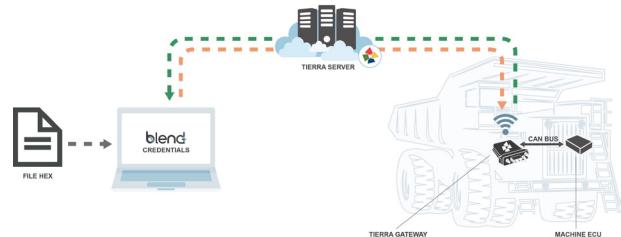
- Timely action before issues occur or worsen
- Predictive analysis to save time, resources and money
- Improved operational efficiency of construction equipment
- Higher autonomy and control



\*For Cummins engines only

## Two-way file transfer

Blend+ "file transfer" function works using two-way communication. The equipment is provided with a telematic device enabling the reception of files containing commands and/or instructions. Remotely control or modify the behavior of your vehicles.



## Preventive maintenance

- Productivity and equipment utilization, fuel consumption on CAN-bus machines, alarms
- Digital inputs, maintenance history, and job costing
- Export data to Excel or PDF

## Cost and staff management

- Lower insurance costs through improved safety and accurate activity reports
- Use reporting tools to lower cost of service
- Use actual hours of assets for individual job costing
- Reduce labor-intensive data-gathering processes

Want to learn more on how Tierra can help your business get ahead of the curve?

**Contact us for a free demo:**  
**[info@tierra-america.com](mailto:info@tierra-america.com)**

Specifications subject to change without notice.  
© 2025 Topcon Corporation. All rights reserved. 7010-2016 M 06/25

Learn more at [topconpositioning.com](https://topconpositioning.com)

