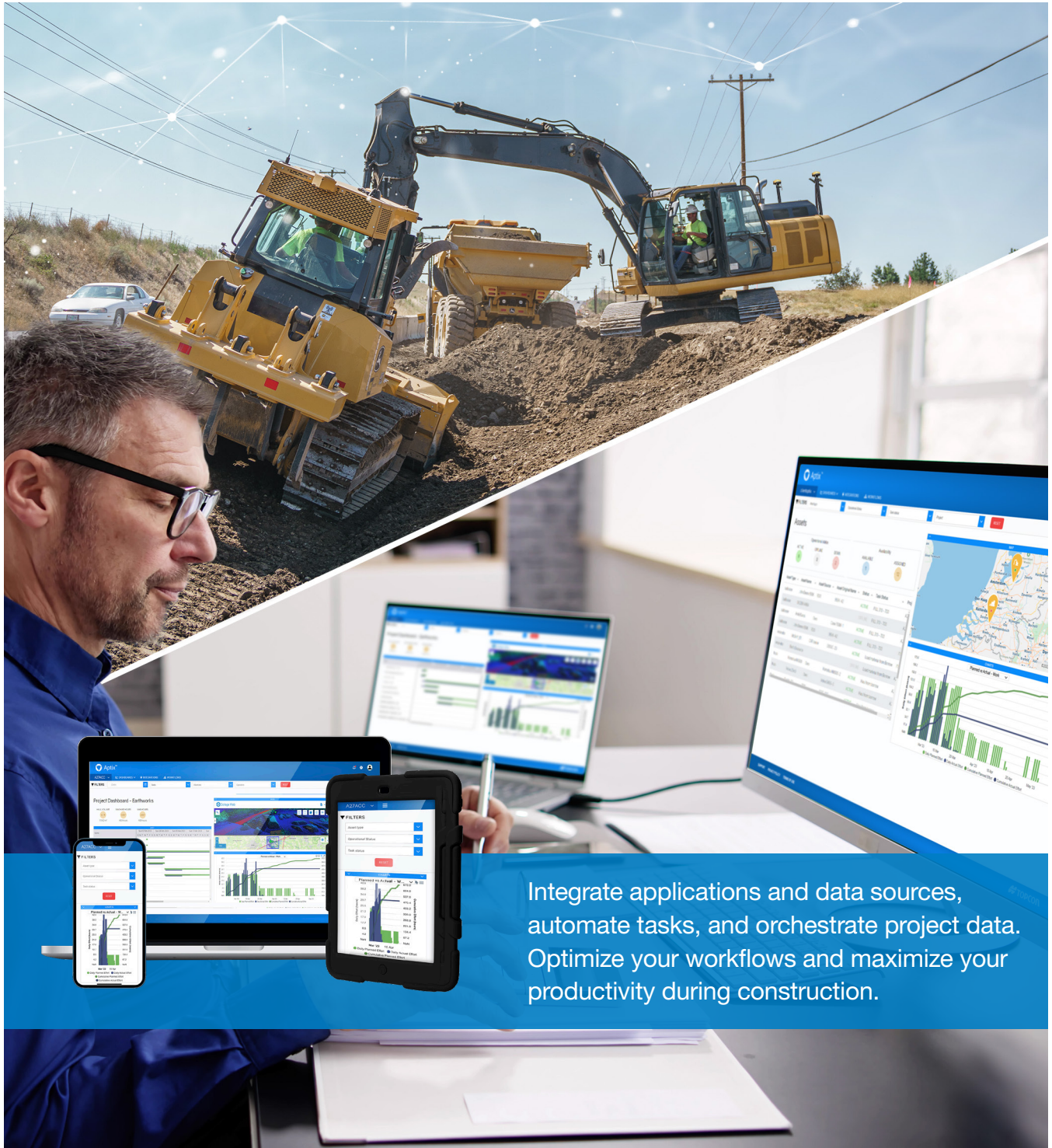


# Integration Platform

Aptix™



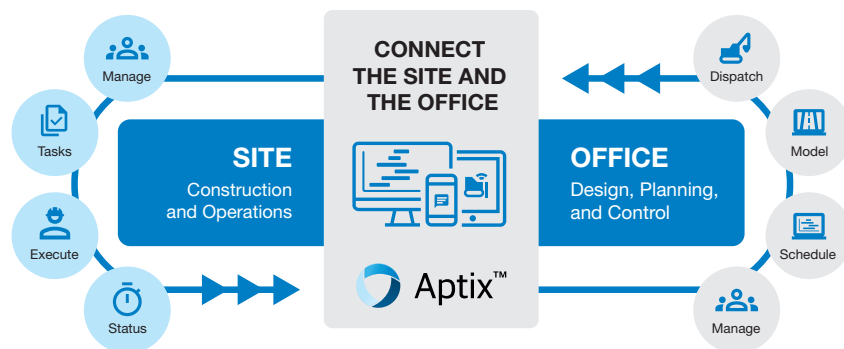
Integrate applications and data sources, automate tasks, and orchestrate project data. Optimize your workflows and maximize your productivity during construction.

# Unleash data-driven success

Automating today's manual processes of managing schedules, models, and telematics

Aptix seamlessly integrates apps, automates tasks into workflows, and visualizes project data delivering time and money-saving insights. Your teams can connect, decide, and update data seamlessly with on-site updates

and as-planned accuracy. Increase efficiency on every aspect of your projects, including office planning, design, construction, and site operations.



## How It Works

### INTEGRATE

- Application Connections
- Data Connections
- Interoperability



### AUTOMATE

- Workflows
- Data Management
- Task Management

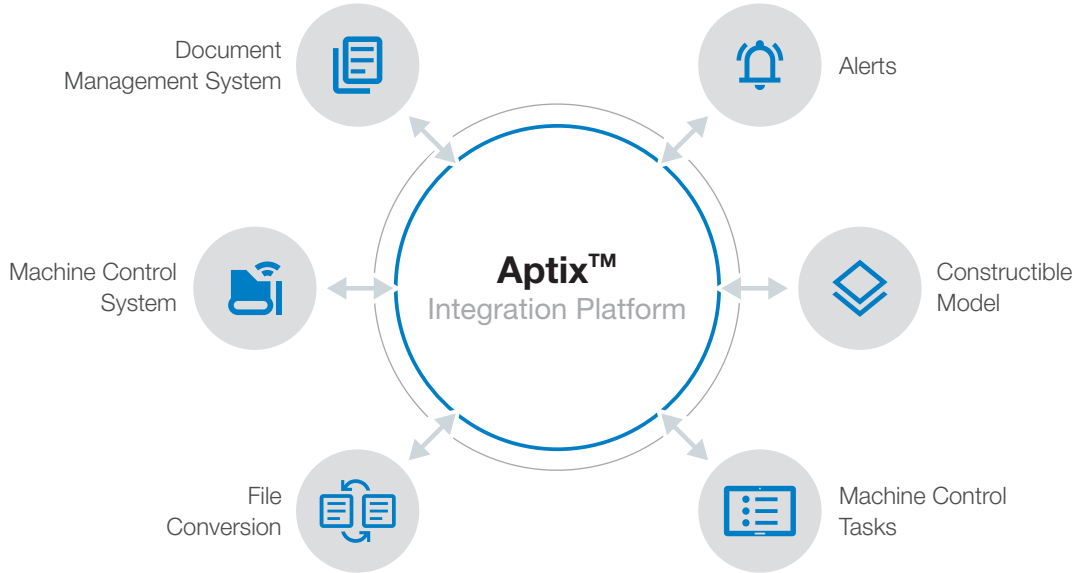


### ORCHESTRATE

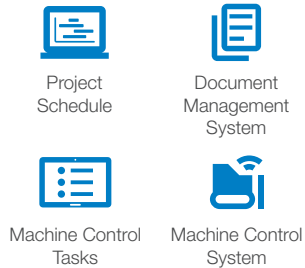
- Processing
- Analysis
- Visualization



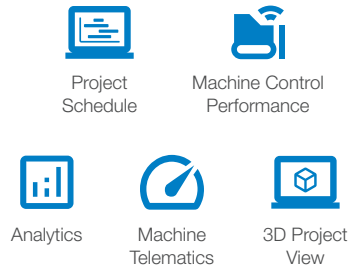
## Model Changes



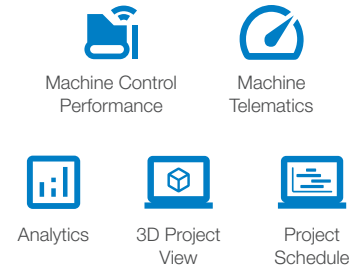
## Schedule Changes



## Planned vs. Actual Reporting



## Reverse Scheduling



### Aptix Insights

- Gain visibility into actual vs. planned project performance and monitor construction activity.
- Make critical data-driven project decisions through user-friendly PC, smartphone, and tablet dashboards.
- Identify project challenges earlier, reducing risks, delays, and cost overruns.
- Improve operational efficiency and profitability.
- View centralized company and project-centric dashboards by aggregating data from multiple applications, project owners, and subcontractors.



View user-friendly dashboards to visualize information critical to your project.

# Improve productivity, minimize rework, and save time and money

**Connect project data across products, disciplines, and teams**

**Optimize data flow between commonly used scheduling, modeling, and telematics applications**

**Automate productivity reports, minimize potential schedule conflicts, increase visibility on project status, and visibility of risk exposure**

**A single source of insightful views of project status**

**Automate distributed model and task change workflows**

**Automate workflows with data source validation, events, and alerts**

## Mixed Fleet Asset Tracking

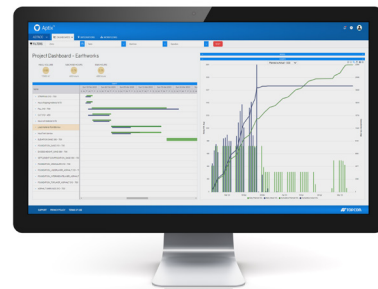
The Site and Office connection enables telematics data from mixed fleet-connected machines to aggregate into asset-tracking dashboards. Any machine using telematic systems with Topcon Tierra® Blend+ is tracked in a company-wide and project-centric asset dashboard, reporting operator activity, fuel burned, task status, and many other valuable machine-focused data points.



- Bobcat
- BOMAG
- CASE
- CAT
- Doosan
- Hyundai
- JCB
- John Deere
- Komatsu
- New Holland

## Sustainability

- As global emissions regulations impact project performance and awarded bonuses for achieving lower planned emissions, Aptix tracks equipment emissions of CO<sub>2</sub> for mixed equipment fleets in one common dashboard.
- Quickly identify which tasks, operators, and equipment models contribute the most to the overall project CO<sub>2</sub> emissions.



Specifications subject to change without notice. Unless identified as a Topcon product, products or brands represented are the property of their respective owners. © 2023 Topcon Corporation. All rights reserved. 7010-2396 B 8/23

[www.topconpositioning.com/aptix](http://www.topconpositioning.com/aptix)