

Field Tools for ArcPad®

Software Extension for ArcPad



Take full advantage of your Topcon GPS receiver with this field mapping and management software

- READY-TO-GO DGPS AND NETWORK RTK CONFIGURATIONS
- LOG RAW DATA FOR POST-PROCESSING
- INFORMATIVE GPS STATUS SCREEN FOR GPS AND GLONASS SATELLITES
- CAPTURE AND GEOTAG IMAGES

Many ESRI ArcGIS® users utilize ArcPad® mobile field software for data collection and field data management. A major benefit of this is having a similar look and feel in the field to what is being used in the office minimizing the learning curve. When purchasing GPS field equipment, you may already have a copy of ESRI ArcPad® and have practice using it or have built custom applications with it. When selecting Topcon GPS equipment, it is easy to utilize and build upon this existing knowledge and workflow with our extension for ArcPad; Field Tools for ArcPad®.



Field Tools for ArcPad allows customers with existing copies of ArcPad and ArcPad customizations to take full advantage of their Topcon GPS receiver while minimizing the learning curve of adopting new field equipment. With this extension, customers can use the GRS-1 and GMS-2 with internal camera or GMS-2 Pro with internal laser distance meter and barcode reader to collect point, line, polygon features, attributes and more! The user will have all of the convenient GPS configurations like Real-time and Network Differential, RTK and Post-Processing at their fingertips. Below are a few specific functions of Field Tools for ArcPad that are unique and provide users with time saving techniques and increased database accuracy.

- Support for GRS-1 Integrated Modem
- Preset GPS Configurations
- Informative GPS Status Screen
- Internal Camera Support
- Geotagged Images
- Height & Width Measurements (with GMS-2 Pro)
- Barcode Reading (with GMS-2 Pro)
- Offset Measurements (with GMS-2 Pro)

With all of this added GPS functionality, and the familiar feel and function of ArcPad mobile field software, users of Field Tools for ArcPad get the best of both worlds.



Field Tools for ArcPad
Software Extension for ArcPad

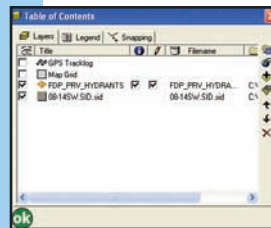


Easy interface for those familiar with ArcPad and ESRI GIS software



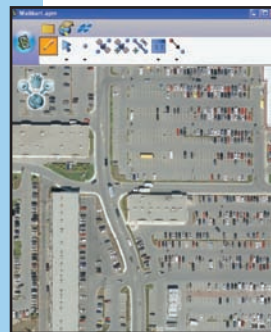
Familiar ArcPad Workflow

Minimize the learning curve of adopting new equipment by utilizing familiar field software. Topcon has added a data collection toolbar to your existing copy of ArcPad giving you full GPS functionality and more!



Work in Native Shapefile Format

No need to convert field data files from a proprietary GPS format to your GIS format. Import and export shapefiles, code libraries, and more directly to/from your Topcon handheld device.



Display Background Images

Give a sense of reality to your fieldwork by displaying an image of the field area you are working in. Compatible file formats are: .jpg, .bmp, and geotiff. Collected field data shows up on top of the image so you are sure you got what you need.



Collect Point, Line, Polygon, Attribute and Photos

It is simple to log any feature type along with associated attribute information such as descriptive data and even geotagged digital photographs.



Field Tools for ArcPad empowers users with unique functions that provide time saving techniques and increased database accuracy.

Preset GPS Configurations

Choose from Real-time Differential, Network Differential, RTK or Network RTK real-time correction techniques. Also, choose to log raw data for post processing. Standard configurations can be customized and saved for later use.



Informative GPS Status Screen

View satellite location information for GPS and GLONASS satellites and additional details such as PDOP, HDOP, VDOP, Pos Type, SNR Graphs, Sky Plot and Receiver Status.



Internal Camera Support

Adjust camera parameters such as image size, brightness, and sharpness from within the ArcPad environment. Save the image as either a .bmp or .jpg file. Images can be stored to the GPS receiver memory or to an optional removable SD Memory Card.



Connect to GRS-1 Internal Modem

With Field Tools for ArcPad you can utilize the GRS-1 internal modem to connect to a real-time network for Network DGPS or Network RTK solutions. The modem can also be used to make an internet connection for real-time data transfer. Upload or download data files directly to and from the field.

(Available with the GRS-1 only.)



Barcode Reading

Barcodes are used as a method to quickly tag assets in a variety of applications. The GMS-2 Pro can be used to read and store barcode information as attributes to a feature. Use the GMS-2 Pro in macro mode and take a picture of the barcode. Then read the barcode data into the attribute field.

(Available with the GMS-2 Pro only.)



Height & Width Measurements

Measure height and widths of features. Take a photograph of the feature and simply tap the top and bottom or left and right extents of the feature on the photograph, the software does the rest. Save the measurement as an attribute to the feature.

(Available with the GMS-2 Pro only.)



Geotagged Image

Snap and link a digital photograph using the internal GRS-1/GMS-2/GMS-2 Pro digital camera and have your image stamped with date, time and positional information for added detail.



Offset Measurements

Measure offset points of inaccessible features or points with poor satellite coverage using the GMS-2 Pro internal laser distance meter. Simply stand in an open area and use the GMS-2 Pro internal laser to shoot the feature to be mapped.

(Available with the GMS-2 Pro only.)



The Leader in Positioning Technology...

Topcon Positioning Systems is the worldwide leading developer and manufacturer of precision positioning equipment and offers the widest selection of innovative precision GPS systems, laser, optical surveying, and machine control products.

From open-field construction projects to isolated surveying sites and from rolling farmland to inner city utility projects, Topcon Positioning Systems creates innovative technology solutions that give a decidedly competitive edge to end-users.

Recognized as the innovative trend-setter in its industry, Topcon has focused on developing an array of integrated positioning and automation technologies to meet the constantly changing demands facing GIS, construction, surveying, agriculture, utilities and law enforcement professionals worldwide. We look forward to building solutions that solve your data collection project challenges today and in the future.

The Leader in Customer Satisfaction...

To ensure that your Topcon product maintains peak performance, your local Topcon dealer offers factory trained and certified service technicians. If service isn't available in your area, our factory offers a repair and return policy second to none.

To locate a Topcon dealer in your area, please visit the Topcon website.



Topcon Positioning Systems, Inc.

7400 National Drive
Livermore, CA 94550
www.topconpositioning.com

Specifications subject to change without notice

©2009 Topcon Corporation All rights reserved.
P/N: 7010-2011 Rev. B Printed in U.S.A. 12/09

System Requirements

- Windows Vista®, Windows® XP/XP Tablet PC Edition
- ArcPad® Version 7.1.1 or Version 8.0 and higher (Note: ArcPad V8.0 does not support Windows CE.NET devices)
- Microsoft® ActiveSync 4.2 or higher (for Windows 2000 or XP) and Windows Mobile Device Center (for Windows Vista)

For latest information on Microsoft ActiveSync and Windows Mobile Device Center, please visit <http://www.microsoft.com/windowsmobile/activesync/default.aspx>

- Windows Mobile® and Windows CE devices
 - Windows CE.NET 4.2 or higher (with ArcPad 7.1.1 only)
 - Windows Mobile 5.1 or higher
 - Supported CPU chips: ARM-based (e.g., Intel® StrongARM and XScale, Samsung, Texas Instruments OMAP, and Atmel)
 - RAM: 64 MB minimum

A Total Solution - Maximize the use of Field Tools for ArcPad with a Topcon Handheld GPS Receiver

GRS-1

- Dual frequency, dual constellation satellite tracking
- GSM and CDMA internal cellular
- Submeter, subfoot or RTK accuracy
- Windows Mobile 6.1 Operating System
- Integrated 2.0 megapixel digital camera
- 256 MB RAM, 1 GB Flash
- Internal Bluetooth® wireless technology
- Replaceable, rechargeable all-day battery



GMS-2

- Dual constellation satellite tracking
- Integrated digital camera
- Internal Bluetooth wireless technology
- Easy access USB memory expansion
- Replaceable, rechargeable all-day battery



GMS-2 Pro (additional functionality to GMS-2)

- Integrated 2.0 megapixel digital camera
- Integrated distance measuring device
- Integrated barcode reader



Your local Authorized Topcon dealer is: